

[Configure ActiveSync with a single Exchange server \(Exchange sync for an iPhone\)](#)

I recently picked up a first-generation iPhone from a friend and after playing around with it for a while I decided that I needed to have my email synchronized on it. For my business I run my BES, Exchange with RPC over HTTPS and ISA on a Server 2003 virtual machine, so my infrastructure was almost ready.

Almost, but not quite. A typical ActiveSync deployment consists of a front-end Exchange server, an ISA server and a second Exchange server. I've only got a single VM (more for convenience than anything else), so I had to make a few changes.

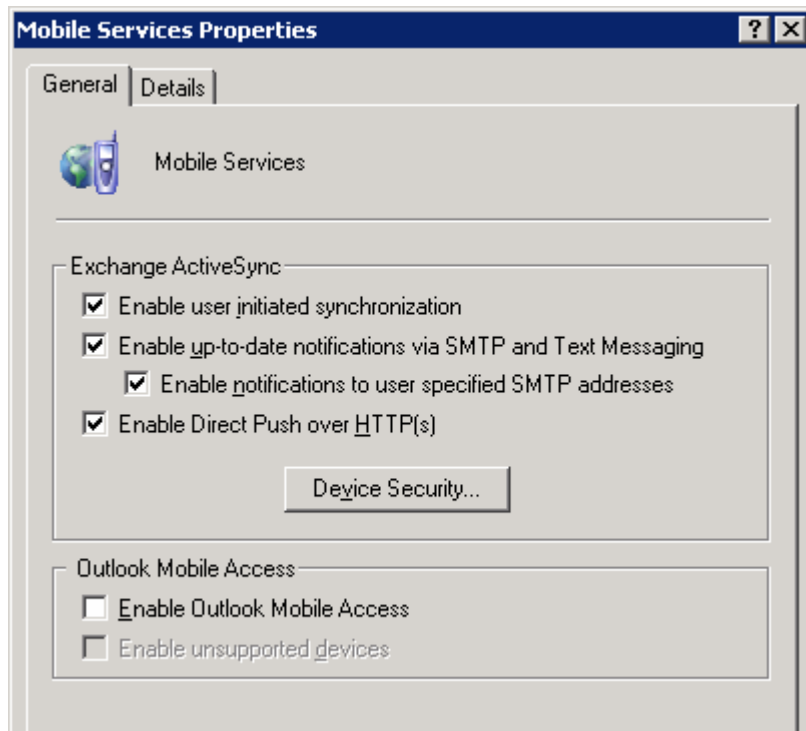
Assumptions

I'm assuming that you've got Exchange and ISA working, either on a single box or two individual servers. You also have a valid SSL certificate and port 443 is open.

Exchange Configuration

Enable ActiveSync

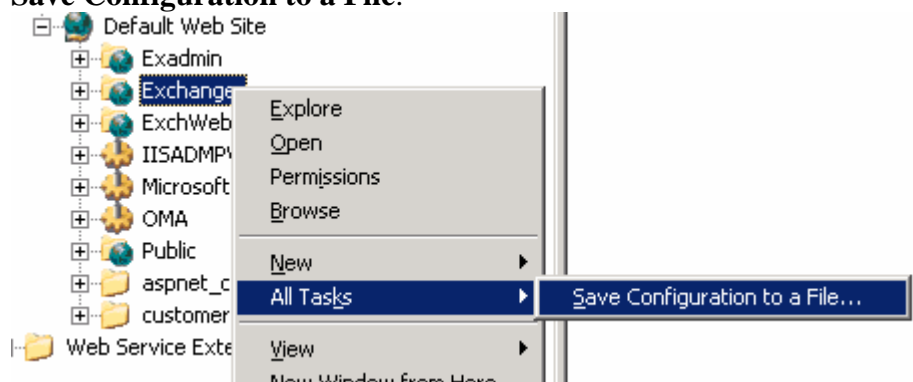
Open the Exchange System Manager (ESM) and expand the Global Settings tree. Right click on Mobile Service, choose Properties and ensure that the ActiveSync options are all checked.



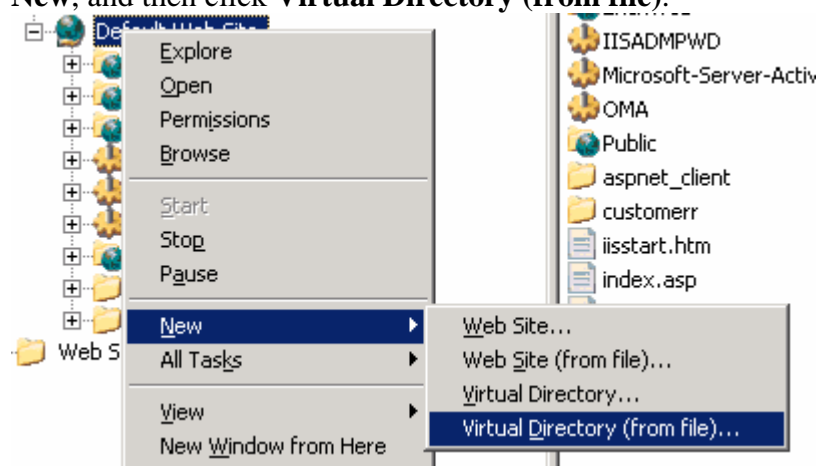
IIS Configuration

These steps are identical to the ones in Microsoft KB 817379 - Exchange ActiveSync and Outlook Mobile Access errors occur when SSL or forms-based authentication is required for Exchange Server 2003.

1. Start Internet Information Services (IIS) Manager.
2. Locate the Exchange virtual directory. The default location is as follows:
3. Web Sites\Default Web Site\Exchange
4. Right-click the Exchange virtual directory, click **All Tasks**, and then click **Save Configuration to a File**.

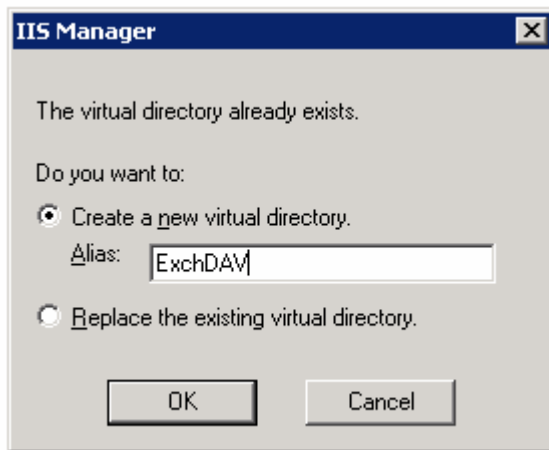


5. In the **File name** box, type a name. For example, type *ExchangeVDir*. Click **OK**.
6. Right-click the root of this Web site. Typically, this is Default Web Site. Click **New**, and then click **Virtual Directory (from file)**.

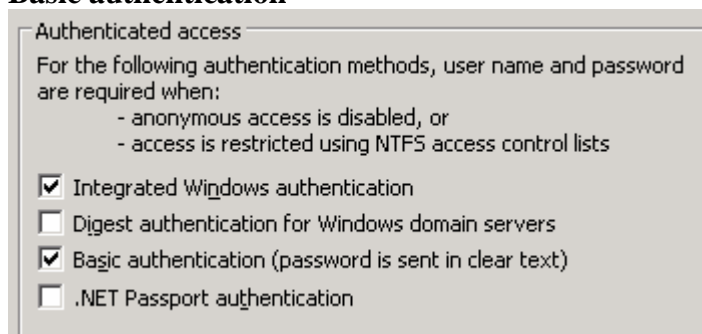


7. In the **Import Configuration** dialog box, click **Browse**, locate the file that you created in step 4, click **Open**, and then click **Read File**.
8. Under **Select a configuration to import**, click **Exchange**, and then click **OK**.

9. A dialog box will appear that states that the "virtual directory already exists."

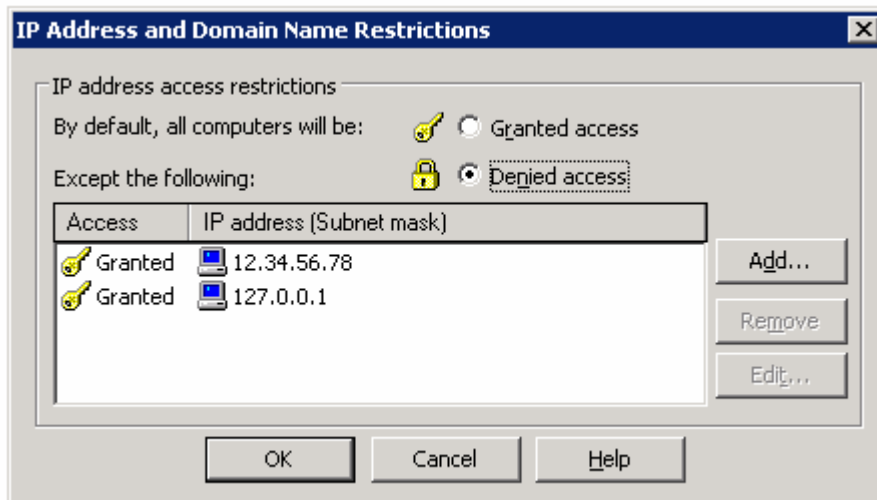


10. In the **Alias** box, type a name for the new virtual directory that you want Exchange ActiveSync and Outlook Mobile Access to use. For example, type *ExchDAV*. Click **OK**.
11. Right-click the new virtual directory. In this example, click *ExchDAV*. Click **Properties**.
12. Click the **Directory Security** tab.
13. Under **Authentication and access control**, click **Edit**.
14. Make sure that only the following authentication methods are enabled, and then click **OK**:
- o **Integrated Windows authentication**
 - o **Basic authentication**

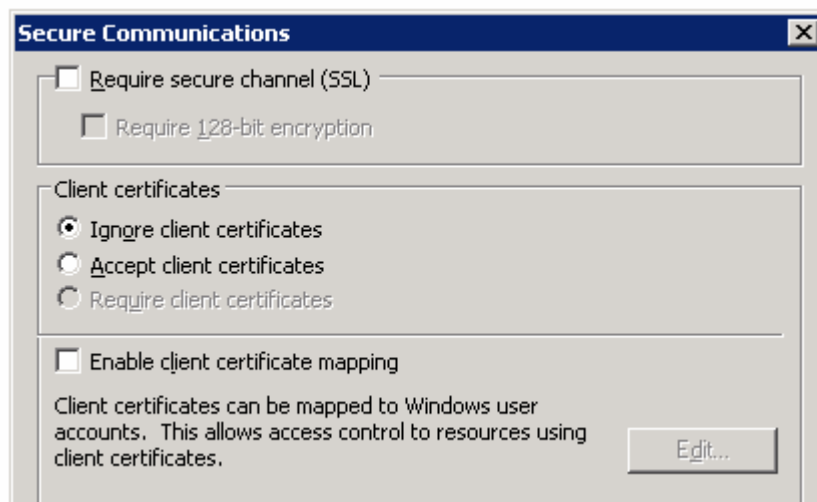


15. On the **Directory Security** tab, under **IP address and domain name restrictions**, click **Edit**.

16. Click the option for **Denied access**, click **Add**, click **Single computer** and type the IP address of the server that you are configuring, and then click **OK**.



17. Under **Secure communications**, click **Edit**. Make sure that **Require secure channel (SSL)** is not enabled, and then click **OK**.



18. Click **OK**, and then close the IIS Manager.
 19. Click **Start**, click **Run**, type **regedit**, and then click **OK**.
 20. Locate the following registry subkey:

```
HKEY_LOCAL_MACHINESYSTEMCurrentControlSetServicesMasSyncParameters
```

21. Right-click **Parameters**, click to **New**, and then click **String Value**.
 22. Type *ExchangeVDir*, and then press ENTER. Right-click *ExchangeVDir*, and then click **Modify**.
 23. **Note** *ExchangeVDir* is case-sensitive. If you do not type *ExchangeVDir* exactly as it appears in this article, ActiveSync does not find the key when it locates the **ExchDAV** folder.
 24. In the **Value data** box, type the name of the new virtual directory that you created in step 8. For example, type */ExchDAV*. Click **OK**.
 25. Quit Registry Editor.
 26. Restart the IIS Admin service. To do this, follow these steps:
 1. Click **Start**, click **Run**, type *services.msc*, and then click **OK**.

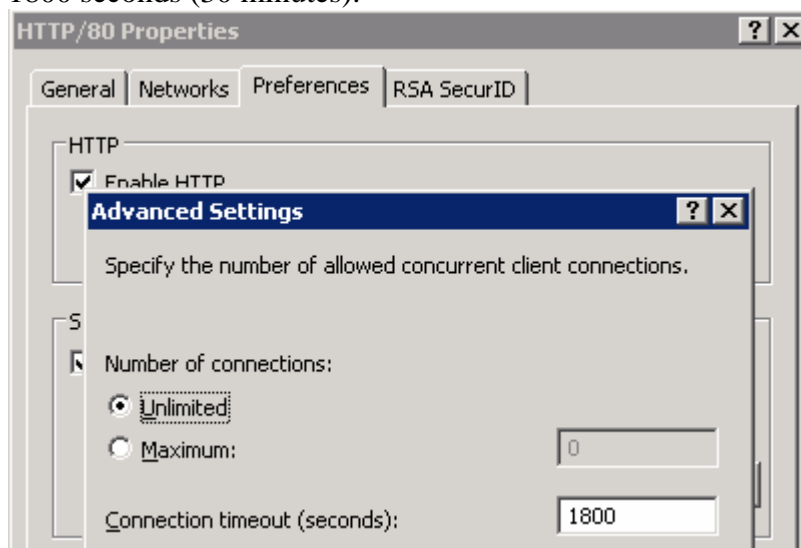
2. In the list of services, right-click **IIS Admin service**, and then click **Restart**.

ISA Configuration

You'll want to increase the heartbeat to 30 minutes per [Microsoft KB 905013](#) - Enterprise firewall configuration for Exchange ActiveSync Direct Push Technology. If you don't do this you'll receive Event ID 3033 in your Application event log with the message:

The average of the most recent [200] heartbeat intervals used by clients is less than or equal to [540]. Make sure that your firewall configuration is set to work correctly with Exchange ActiveSync and direct push technology. Specifically, make sure that your firewall is configured so that requests to Exchange ActiveSync do not expire before they have the opportunity to be processed.

1. Open **ISA Server Management** and click **Firewall Policy**.
2. On the **Toolbox** tab, click **Network Objects**.
3. Expand the **Web Listeners** node, and then view the advanced properties of the applicable Web Listener.
4. Click the **Preferences** tab, and then click **Advanced**.
5. Modify the **Connection Timeout** from the default 120 seconds (2 minutes) to 1800 seconds (30 minutes).



6. Click **OK** two times to accept these changes.
7. Click **Apply**.

The End

That's really all there is to it. If you've got RPC over HTTPS working then your ISA server should be ready to handle traffic on port 443, and you're only a few steps away from ActiveSync glory.